

3 Knuckle Full Surface Hinges

Heavy Weight Concealed Bearing

CB1931R – (ANSI A8311) Steel – polished and plated or phosphated and prime coated for painting

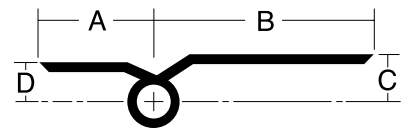
CB1991R – (ANSI A2311) Brass or bronze – polished and plated or painted

CB1991R (32) – (ANSI A5311) Stainless steel – highly polished

CB1991R (32D) – (ANSI A5311) Stainless steel – satin finish



- For heavy, or high frequency mineral core, or wood doors with edge rails that won't hold screws, hung on channel iron frames
- Heavy weight gauges increase available bearing surface area for maximum friction reduction
- Size 6" (152mm) also recommended for lead lined doors not exceeding 250 lbs (113 Kg)
- Concealed bearing for trouble-free, long life – no oil, no grease, no maintenance
- Pins in nonferrous hinges are stainless steel
- Reversible flush tips and pins
- Hinges can be furnished with hospital tips (HT)
- Consider using a back plate with these hinges
- Limited lifetime warranty
- Available with an inline hole pattern for tubular steel doors
- Available with exposed tips (ET)
- Packed with machine screws and grommet nuts for 1 3/4" doors



Measurements below

Size Length of Joint	Width		Offset		Gauge of Metal	Flat Head Screws Per Piece		Quantity Per Box	Quantity Per Case	Case Weight	
	Frame Leaf (A)	Door Leaf (B)	Door Leaf (C)	Frame Leaf (D)		Frame Leaf	Door Leaf			Bronze	Steel
Inches (mm)	Inches (mm)	Inches (mm)	Inches (mm)	Inches (mm)	Inches (mm)					Lbs. (Kg)	Lbs. (Kg)
4 1/2 (114)	1 1/2 (38.1)	2 9/16 (65)	5/8 (15.9)	1/2 (12.7)	.180 (4.6)	3-12-24 x 1/2	4-12-24 X1/2	3 ea.	30 ea.	56 (26)	44 (20)
5 (127)	1 1/2 (38.1)	2 7/8 (73)	5/8 (15.9)	1/2 (12.7)	.190 (4.8)	4-12-24 x 1/2	4-12-24 x 1/2	3 ea.	24 ea.	57 (26)	51 (23)
6 (152)	1 1/2 (38.1)	3 1/4 (82.6)	5/8 (15.9)	1/2 (12.7)	.203 (5.2)	4-1/4-20 x 1/2	5-1/4-20 x 1/2	3 ea.	24 ea.	80 (36)	74 (34)

* Available in Steel only

Consult factory for other sizes not listed